

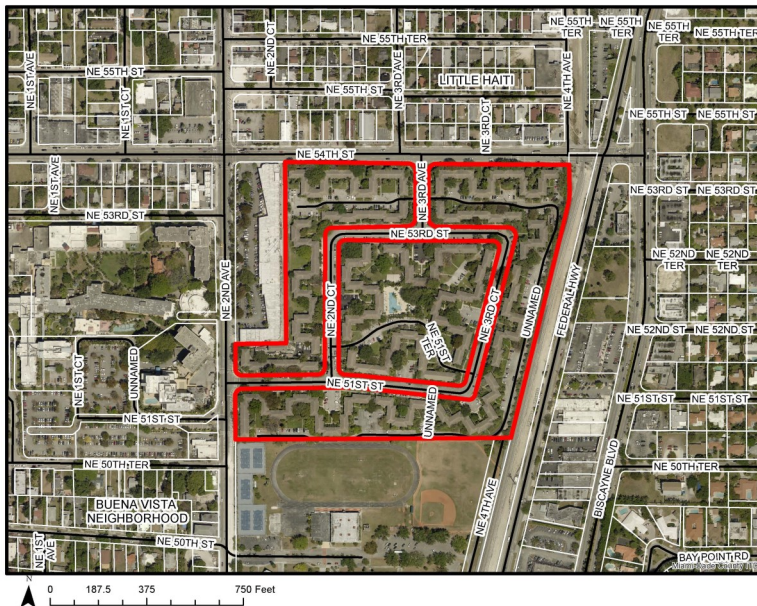
# EASTSIDE RIDGE SPECIAL AREA PLAN (SAP) COMMUNITY MEETING

## WHEN

Wednesday, August 30, 2017  
6:30pm

## WHERE

Little Haiti Cultural Center  
212 NE 59th Terrace  
Miami, FL 33137



Eastside Ridge is a 22-acre development located at the southern tip of the Little Haiti Neighborhood. The development is buffered by the FEC rail line to the East, Archbishop Curley-Notre Dame Middle-High School to the South, Miami Jewish Health Systems to the West and 54th Street to the North.

## COMMUNITY INVOLVEMENT

Members of the community are invited to attend and share their comments on this project.



For additional information,  
please contact:

David Snow  
dsnow@miamigov.com  
305-416-1474