

# City of Miami




PEDRO G. HERNANDEZ, P.E.  
City Manager

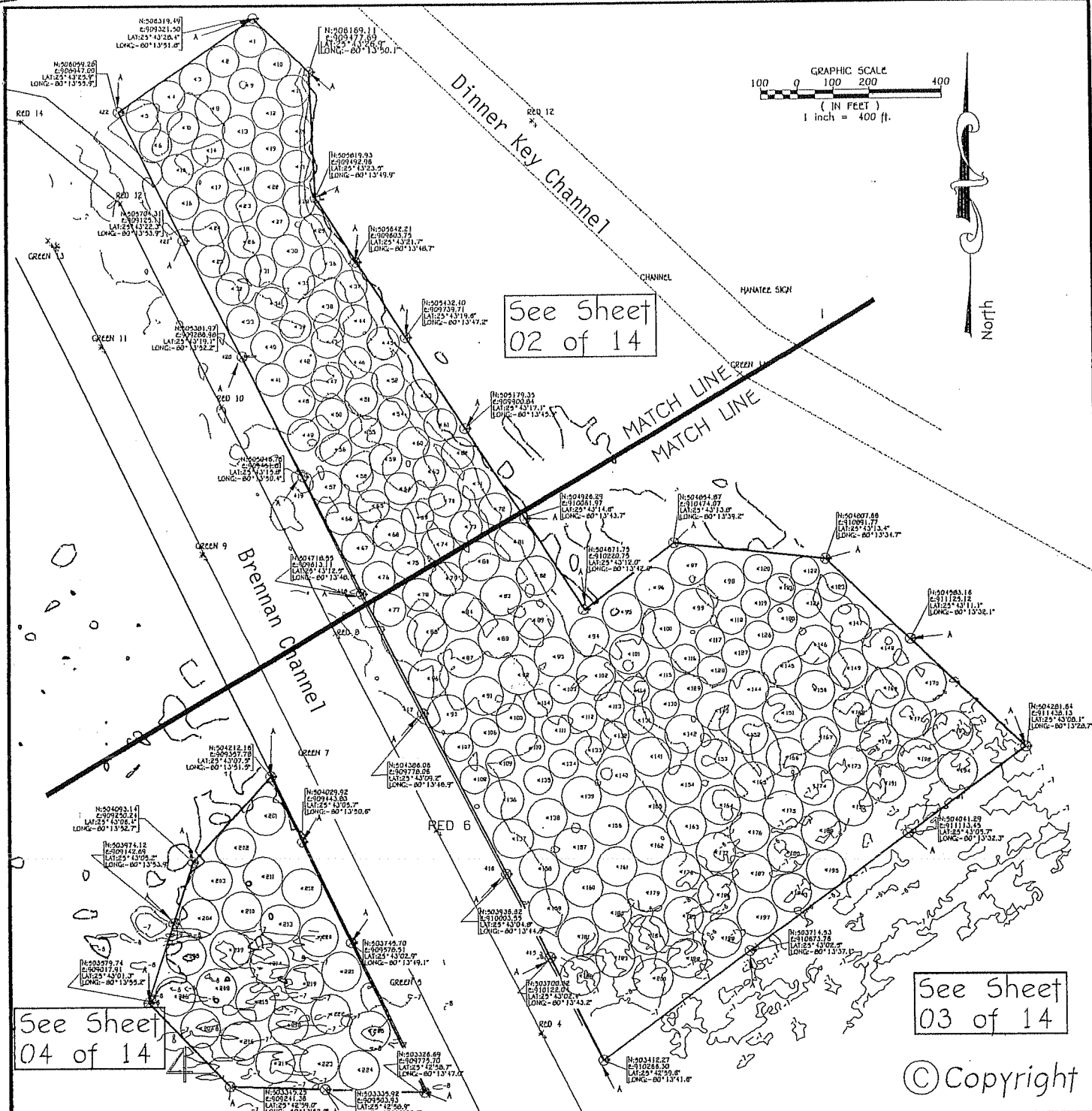
## DINNER KEY MUNICIPAL MOORING FACILITY INFORMATION BULLETIN #2 APRIL 5, 2009

Please be advised that installation of anchors and moorings is tentatively scheduled to commence during the third week in April. The main mooring field is to be located between the Dinner Key Channel and Brennan Channel, and will have 200 moorings. The outward boundaries of the main field correspond with Red Day Marker #4 in the Brennan Channel and Green Day Marker #9 in the Dinner Key Channel. A second, smaller field will be located just south of the Brennan Channel and will have 25 moorings, laying between Day Markers #4 and #7 of the Brennan Channel.

Construction will begin with the installation of boundary buoys marking the perimeters of both mooring fields. Installation of the main mooring field will be done first, with anchor installation beginning closest to the Spoil Island off Dinner Key Marina, working outward. A copy of the mooring field layout can be found on the back side of this bulletin. It will be necessary for vessels located in the area in between the 2 channels to relocate their vessels out of the construction area in advance of this work. The marina is working to contact and notify all affected vessel owners – it is very important that vessel owners in the Dinner Key anchorage area contact the marina office at (305) 579-6950 so that we can maintain contact during construction and minimize inconvenience to you. As the moorings are installed, we will begin moving new customers onto moorings as quickly as possible.

We are continuing to accept applications for moorings for vessels to 40'. Vessel owners can apply online at [www.miami-marinas.com](http://www.miami-marinas.com) at our Mooring Facility link, or by emailing [dmuelhaupt@miamigov.com](mailto:dmuelhaupt@miamigov.com) or by stopping by or calling the Marina Office at (305) 579-6950. Should you have any questions regarding this bulletin, please don't hesitate to contact our office.

  
Stephen H. Bogner  
Marinas Manager



See Sheet  
04 of 14

See Sheet  
02 of 14

See Sheet  
03 of 14

© Copyright

REVISIONS				BY		DATE		SURVEY EC.		PG.		Project Name		Plan	
													Engineering Design Dinner Key Mooring Facility City of Miami, Florida	Dinner Key Marina Index Sheet Mooring Site Revisions	

Science and Engineering in the Traditions of The Challenger Expedition  
EB 5284

**Challenger Enterprises Inc.**  
MAIL: P O Box 285,  
Safety Harbor, Florida 34695-0285  
OFFICE: 4419 Madison Str. Suite 111  
New Port Richey, Florida 34652  
Phone & Fax (727) 236-3642

Client  
City of Miami, Florida

Florida Professional Engineer No. 21377

DATE	10/26/2007
FILE NAME	01-RELOC-MRNGS1.dwg
PROJECT NO.	
SHEET	1 OF 14